



**LITESPHERE**  
**ADAPT DROP**

## ADAPT Drop String Light- How it works

A simple 3 step order process for cord spacing, drop length with light engine and globe choice for endless design combinations to create a unique experience for personal or public space.

### ● CONNECTION

IP65 Outdoor 2 pin twist connector for solid, reliable performance.

### ● SHADE ADAPTER - optional

Tivoli's Patent Pending universal shade adapter allows you to mix and match any shade with our line of String Light.

### ● LIGHT SHADE - optional

Multiple light shades to choose from to add form and function to your design.

### ● DROP

Tivoli's New DROP system gives you standard 3 length options and a custom offering for additional lengths.

### ● VHO LED

With 90 lumens each, Tivoli's VHO wedge based LED is 23 times brighter than our standard output offering. Built with Nichia SMD LEDs and a thermal plastic base for optimal heat dissipation.

### ● ADAPT GLOBES & ADAPTER

11 globe options to finish your design and achieve a personal look.



# 1 Choose Your Cord

\*Max run lengths based on Tivolis recommended lumen drop.  
 \*\*Weights are based on (1) 50' single run ONLY - no globe or drop attached.

## Order Information

**LSD-STRND-24**  
 BLACK, 24" OC, strand only (no DROP)  
 includes push PVC end cap for field cutting.



**NOTE:** (1) LSD-LEAD-10 must be ordered with each, complete electrical maximum run.

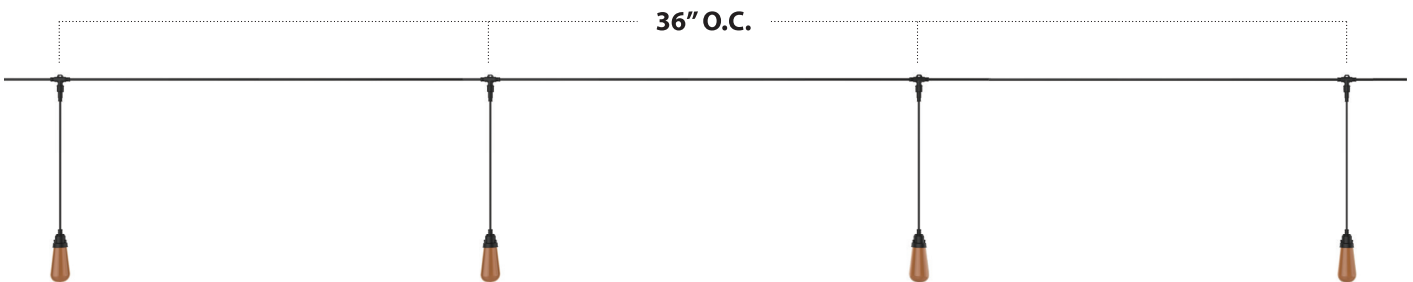
| ON CENTER SPACING | *MAX ELECTRICAL RUN | WATT PER FOOT | **WEIGHT (50' STRAND ONLY) |
|-------------------|---------------------|---------------|----------------------------|
| 24"               | 50'                 | 0.48          | 3.56 lbs.                  |



## Order Information

**LSD-STRND-36**  
 BLACK, 36" OC, strand only (no DROP)  
 includes push PVC end cap for field cutting.

| ON CENTER SPACING | *MAX ELECTRICAL RUN | WATT PER FOOT | **WEIGHT (50' STRAND ONLY) |
|-------------------|---------------------|---------------|----------------------------|
| 36"               | 100'                | 0.32          | 3.89 lbs.                  |



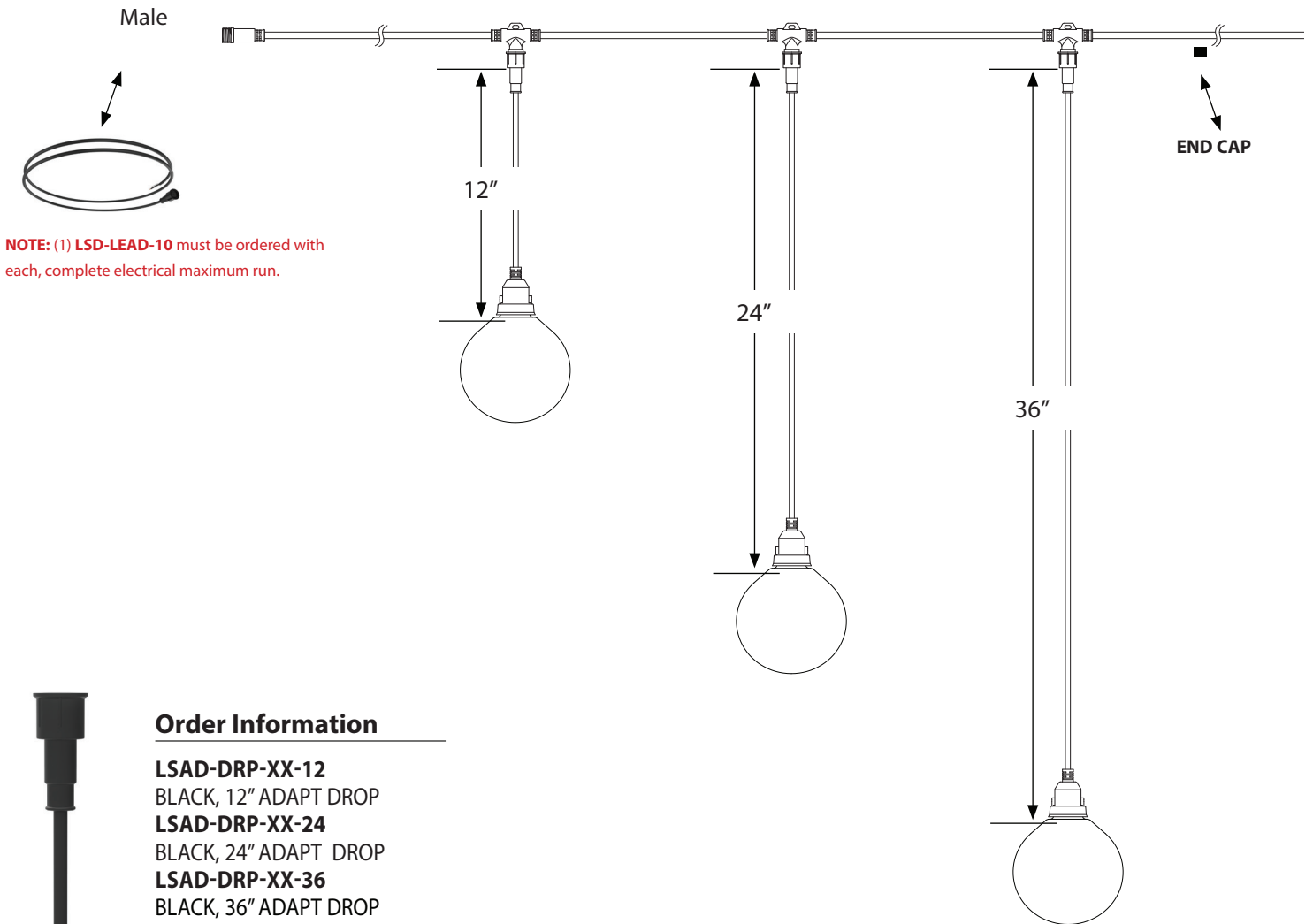
## Order Information

**LSD-STRND-48**  
 BLACK, 24" OC strand - Staggered socket capped spacing to 48" OC, strand only (no DROP)  
 includes push PVC end cap for field cutting.

| ON CENTER SPACING | *MAX ELECTRICAL RUN | WATT PER FOOT | **WEIGHT (50' STRAND ONLY) |
|-------------------|---------------------|---------------|----------------------------|
| 48"               | 120'                | 0.24          | 3.56 lbs.                  |



## 2 Choose Your DROP Option & LED Color



**NOTE:** (1) **LSD-LEAD-10** must be ordered with each, complete electrical maximum run.



### Order Information

- LSAD-DRP-XX-12**  
BLACK, 12" ADAPT DROP
- LSAD-DRP-XX-24**  
BLACK, 24" ADAPT DROP
- LSAD-DRP-XX-36**  
BLACK, 36" ADAPT DROP

**XX** = Kelvin Temperature Option: 19, 27, 30, 35, 40, 50, AM, RD, GN, YL, RB

### TOTAL WEIGHT

- 12": 0.15 lbs.
- 24": 0.19 lbs.
- 36": 0.22 lbs.

All DROPS are pre-built with Adapter and VHO LED chip and ready to install in field.  
\* Consult factory for lead time and MOQ

**3 Choose Your Globe**

**LSA Globes:** All ADAPT globes come with (1) foam washer each.



Shatter Resistant Silicone Coating  
(Shatter resistance assist with silicone coating - Glass may still break under certain conditions)

G125 Globe (Weight: 4 oz./ea.)



Ana  
**LSA-ANA**



Angela  
**LSA-ANG**



Gina  
**LSA-GIN**



Gaby  
**LSA-GAB**



Katie  
**LSA-KAT**



Susan\*  
**LSA-SUS**



Toni\*  
**LSA-TON**



Lucia\*  
**LSA-LUC**



Victoria\*  
**LSA-VIC**

\*Consult Factory for MOQ and Lead Time.

ST19 Globe (Weight: 1.6 oz./ea.)



Laura\*  
**LSA-LAU**



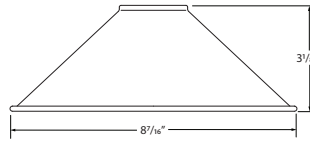
Shatter Resistant  
Silicone Coating



Brenda  
**LSA-BRE**

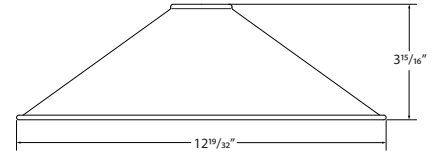
## Light Shades

### HAT



**SHADE-HT-BK-BK-8**

Light Shade - HAT  
8.3" Black Top, Black Bottom



**SHADE-HT-BK-BK-13**

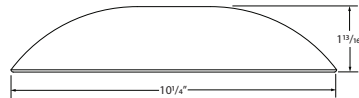
Light Shade - HAT  
12.6" Black Top, Black Bottom

**\*SHADE-HT-BK-CO-13**

Light Shade - HAT  
12.6" Black Top, Copper Bottom

\*Consult factory for lead time and MOQ

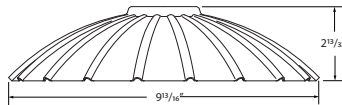
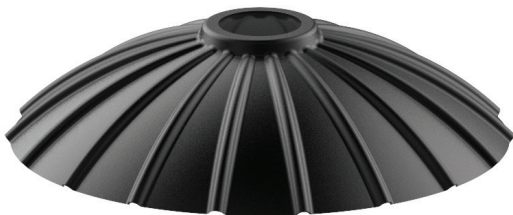
### DISH



**SHADE-DS-BK-BK-10**

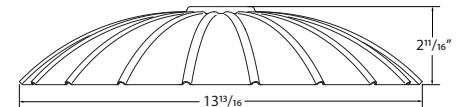
Light Shade - DISH  
8.0" Black Top, Black Bottom

### FLOWER



**SHADE-FL-BK-BK-10**

Light Shade - FLOWER  
9.8" Light Shade, Black Top, Black Bottom



**SHADE-FL-BK-BK-13**

Light Shade - FLOWER  
13.8" Light Shade, Black Top, Black Bottom

### Accessories

**SHADE-ADP-BK-01** Light Shade Adapter - Single

PVC Black Adapter - Sold individually. Includes (1) Adapter, (1) Adapter plates, (2) set screws and (1) Allen Key

**SHADE-ADP-BK-26** Light Shade Adapter - 24" OC

PVC Black Adapter Kit - Sold in packs of 26. Includes (26) Adapters, (26) Adapter plates, (52) set screws and (1) Allen Key

**SHADE-ADP-BK-17** Light Shade Adapter - 36" OC

PVC Black Adapter Kit - Sold in packs of 17. Includes (17) Adapters, (17) Adapter plates, (34) set screws and (1) Allen Key

**SHADE-ADP-BK-13** Light Shade Adapter - 48" OC

PVC Black Adapter Kit - Sold in packs of 13. Includes (13) Adapters, (13) Adapter plates, (26) set screws and (1) Allen Key



Shade Adapter Assembly Example

## Mounting

Multi-purpose cable with cable locks for quick, reliable support up to 330 pounds of load and spans from 60 - 500 feet.

**WARNING:** For suspension application, catenary cable is required to support the product, otherwise the warranty will be void.



**LS-CABLE-60** Catenary Cable Kit - 60'  
 (1/8" stainless steel aircraft cable includes 2 cables locks for use with loads up to 200lbs)

**LS-CABLE-110** Catenary Cable Kit - 110'  
 (1/8" stainless steel aircraft cable includes 2 cables locks for use with loads up to 200lbs)

**LS-CABLE-500** Catenary Cable Kit - 500'  
 (1/8" stainless steel aircraft cable for use with loads up to 200lbs)



**LS-LOCK-X** Cable Lock  
**X = 2 (2 Locks), 4 (4 locks)** Includes (1) cable release key.  
 Cable Lock for 1/8th inch cable, Heavy-duty lockable fasteners support loads up to 200 lbs. Can be easily adjusted without the use of tools.



**LS-TT** Catenary Tensioning Tool  
 Catenary Cable Tensioning Tool up to 880lbs with minimal effort due to the 6:1 gear drive mechanism. Integral torque gauge controls the load applied to the wire, giving consistent tension every time and optimizing the life of the wire.

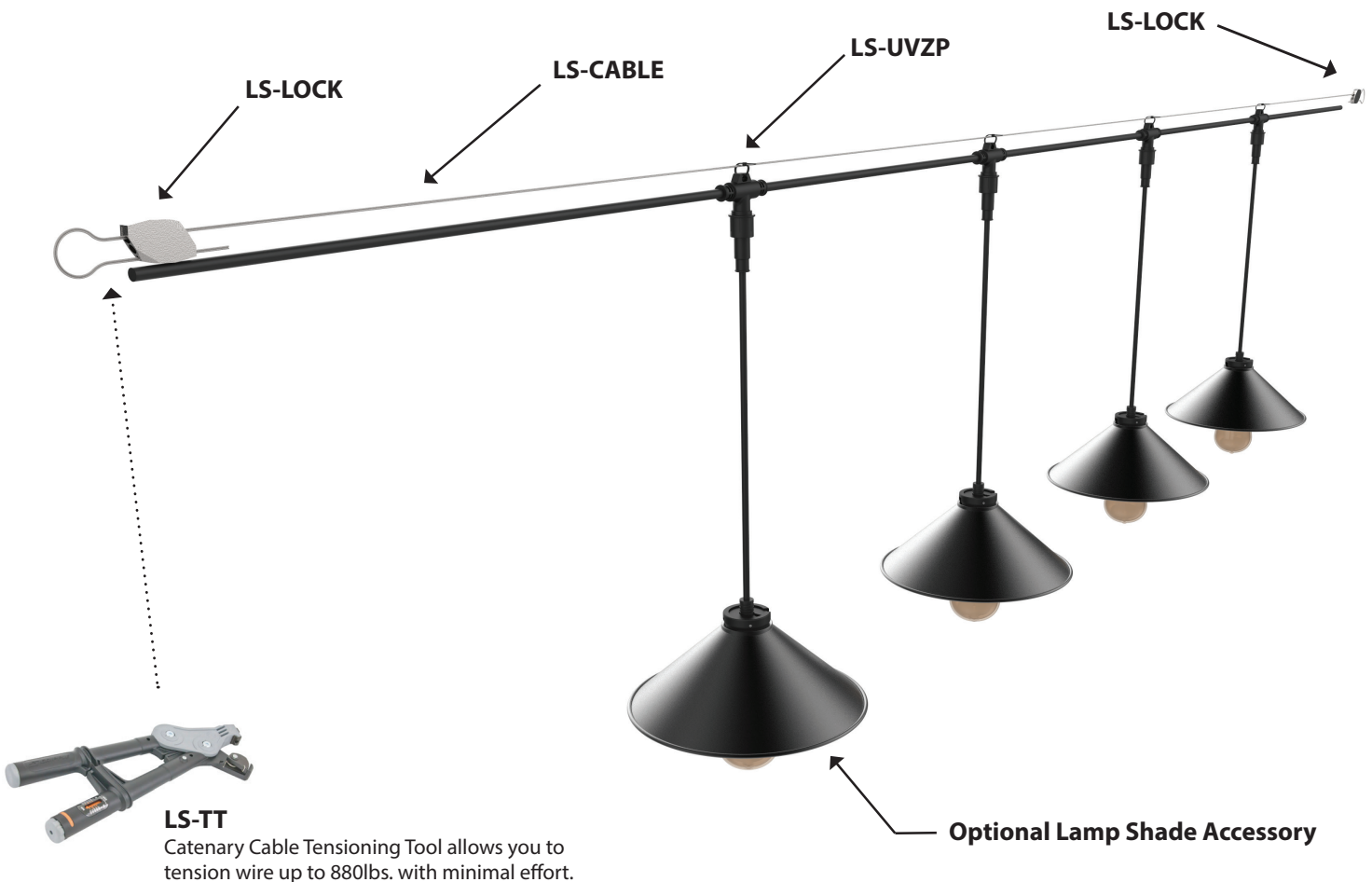


**LS-UVZP-BK-50** UV Zip Ties  
 50 pc Bag set. UV resistant, heavy duty ties. Maximum weight up to 100 lbs./per tie.



**LS-UVZP-BK-30** UV Zip Ties  
 30 pc Bag set. UV resistant, heavy duty ties. Maximum weight up to 100 lbs./per tie.

## Installation with Suspension Cable



## Replacement Parts

### Light Engine



- |  |   |
|--|---|
| <p><b>LSL-19-V-12</b><br/>12V Wedge base<br/>1900K</p> <p><b>LSL-27-V-12</b><br/>12V Wedge base<br/>2700K</p> <p><b>LSL-30-V-12</b><br/>12V Wedge base<br/>3000K</p> <p><b>LSL-35-V-12</b><br/>12V Wedge base<br/>3500K</p> <p><b>LSL-40-V-12</b><br/>12V Wedge base<br/>4000K</p> <p><b>LSL-50-V-12</b><br/>12V Wedge base<br/>5000K</p> <p><b>LSL-AM-V-12</b><br/>12V Wedge base<br/>Amber</p> | <p><b>LSL-RD-V-12</b><br/>12V Wedge base<br/>Red</p> <p><b>LSL-RB-V-12</b><br/>12V Wedge base<br/>Royal Blue</p> <p><b>LSL-GN-V-12</b><br/>12V Wedge base<br/>Green</p> <p><b>LSL-YL-V-12</b><br/>12V Wedge base<br/>Yellow</p> |
|--|---|

### Lead Wire



- LSD-LEAD-10**  
10' Lead Wire  
IP67 Female Twist Connection  
to SJTW 16AWG/2C bare wire.

### End Cap



- LSD-EC-PK20**  
BLACK, T-Socket End Cap, PVC  
- sold in packs of 20





## Recommended Power Supplies

### ADNM - NON DIMMING

| DESCRIPTION                           | CAT NO            | APPLICATION         | PRIMARY VOLTAGE        | SECONDARY VOLTAGE | MAX LOAD | CIRCUIT BREAKERS | CIRCUIT CAPACITY |
|---------------------------------------|-------------------|---------------------|------------------------|-------------------|----------|------------------|------------------|
| ADNM Series<br>Class 2<br>Transformer | ADNM-60-1-5-12-D  | Indoor /<br>Outdoor | 100-277V AC<br>5ø60 HZ | 12V DC            | 60W      | 1                | 5A               |
|                                       | ADNM-80-1-5-12-D  |                     |                        |                   | 60W      | 1                | 5A               |
|                                       | ADNM-150-2-5-12-D |                     |                        |                   | 2x60W    | 2                | 2x5A             |
|                                       | ADNM-240-3-5-12-D |                     |                        |                   | 3x60W    | 3                | 3x5A             |
|                                       | ADNM-320-4-5-12-D |                     |                        |                   | 4x60W    | 4                | 4x5A             |

### ADNM - 0-10V DIMMING

| DESCRIPTION                           | CAT NO              | APPLICATION         | PRIMARY VOLTAGE        | SECONDARY VOLTAGE | CIRCUIT BREAKERS | MAX LOAD | CIRCUIT CAPACITY |
|---------------------------------------|---------------------|---------------------|------------------------|-------------------|------------------|----------|------------------|
| ADNM Series<br>Class 2<br>Transformer | ADNM-60-1-5-12-DOT  | Indoor /<br>Outdoor | 100-277V AC<br>5ø60 Hz | 12V DC            | 1                | 60W      | 5A               |
|                                       | ADNM-80-1-5-12-DOT  |                     |                        |                   | 1                | 60W      | 5A               |
|                                       | ADNM-150-2-5-12-DOT |                     |                        |                   | 2                | 2x60W    | 2x5A             |
|                                       | ADNM-240-3-5-12-DOT |                     |                        |                   | 3                | 3x60W    | 3x5A             |
|                                       | ADNM-320-4-5-12-DOT |                     |                        |                   | 4                | 4x60W    | 4x5A             |

### ADNM - DMX SINGLE ADDRESS

| DESCRIPTION                           | CAT NO              | APPLICATION         | PRIMARY VOLTAGE        | SECONDARY VOLTAGE | CIRCUIT BREAKERS | MAX LOAD | CIRCUIT CAPACITY |
|---------------------------------------|---------------------|---------------------|------------------------|-------------------|------------------|----------|------------------|
| ADNM Series<br>Class 2<br>Transformer | ADNM-60-1-5-12-DIN  | Indoor /<br>Outdoor | 100-277V AC<br>5ø60 Hz | 12V DC            | 1                | 60W      | 5A               |
|                                       | ADNM-80-1-5-12-DIN  |                     |                        |                   | 1                | 60W      | 5A               |
|                                       | ADNM-150-2-5-12-DIN |                     |                        |                   | 2                | 2x60W    | 2x5A             |
|                                       | ADNM-240-3-5-12-DIN |                     |                        |                   | 3                | 3x60W    | 3x5A             |
|                                       | ADNM-320-4-5-12-DIN |                     |                        |                   | 4                | 4x60W    | 4x5A             |

### ADNM - DMX MULTI ADDRESS

| DESCRIPTION                           | CAT NO                | APPLICATION      | PRIMARY VOLTAGE        | SECONDARY VOLTAGE | CIRCUIT BREAKERS | MAX LOAD | CIRCUIT CAPACITY |
|---------------------------------------|-----------------------|------------------|------------------------|-------------------|------------------|----------|------------------|
| ADNM Series<br>Class 2<br>Transformer | ADNM-150-2-5-12-DIN-2 | Indoor /<br>Damp | 100-277V AC<br>5ø60 Hz | 12V DC            | 2                | 2x60W    | 5A               |
|                                       | ADNM-240-3-5-12-DIN-3 |                  |                        |                   | 3                | 3x60W    | 3x5A             |

## Recommended Power Supplies

### INFINITY - MLV / ELV / 0-10V / PWM / TRIAC

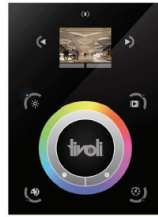
| DESCRIPTION                               | CAT NO            | APPLICATION         | PRIMARY VOLTAGE | SECONDARY VOLTAGE | CIRCUIT BREAKERS | MAX LOAD | MIN LOAD | CIRCUIT CAPACITY |
|---|-------------------|---------------------|-----------------|-------------------|------------------|----------|----------|------------------|
| Infinity Series<br>Class 2<br>Transformer | INF-J-30-1-2.5-12 | Indoor /<br>Outdoor | 100 - 277V AC   | 12VDC             | 1                | 30W      | 3W       | 2.5A             |
|   | INF-J-60-1-5-12   |                     |                 |                   | 1                | 60W      | 6W       | 5A               |
|   | INF-J-180-3-5-12  |                     |                 |                   | 3                | 3x60W    | 3x6W     | 3x5A             |
|   | INF-J-300-5-5-12  |                     |                 |                   | 5                | 5x60W    | 5x6W     | 5x5A             |

## Controls



### TVOQ-1-WH

WH (White only)  
512 DMX channel, 16 scene,  
4 zone, glass touch screen



### TVOQ-10-XX-7

XX = BK (Black), WH (White)  
1024 DMX channel, 500 scene,  
10 zone, glass touch screen



### TVOQ-2-XX

XX = BK (Black), WH (White)  
512 DMX channel, 99 scene,  
1 zone, glass touch screen